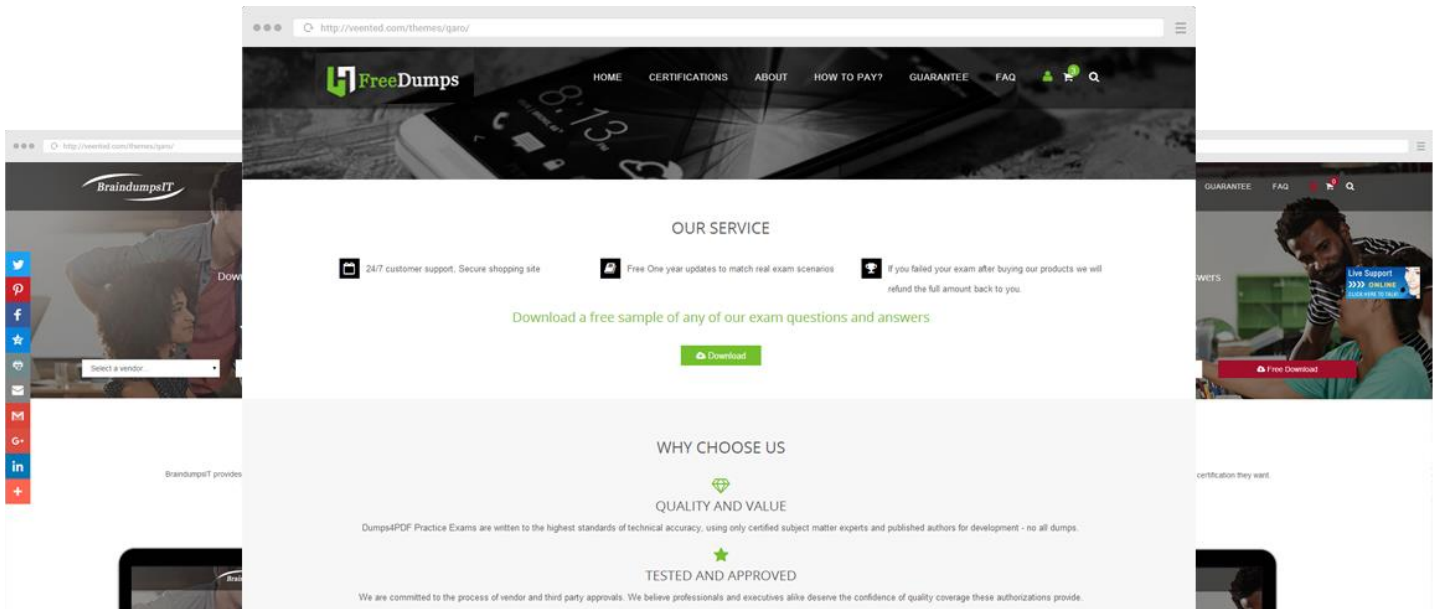


FreeDumps



WHAT PEOPLE SAY

Disclaimer Policy: The site does not guarantee the content of the comments. Because of the different time and the changes in the scope of the exam, it can produce different effect. Before you purchase the dump, please carefully read the product introduction from the page. In addition, please be advised the site will not be responsible for the content of the comments and contradictions between users.

“ Can not believe C2040-440! it is really same with the exam



ATWOOD

“ If you want to pass exam casually I advise you to purchase study guide. A2010-578 study guide have a part of questions with real test.



MILES

<http://www.freedumps.top>

Latest valid dumps torrent and free demo for certification exam prep

Exam : **200-120**

Title : CCNA Cisco Certified Network Associate CCNA (803)

Vendor : Cisco

Version : DEMO

NO.1 RouterA is unable to reach RouterB. Both routers are running IOS version 12.0.

<pre>RouterA# show running-config <some output text omitted> interface serial0/0 bandwidth 64 ip address 172.16.100.2 255.255.255.0 encapsulation frame-relay frame-relay map ip 172.16.100.1 200 broadcast</pre>	
---	--

After reviewing the command output and graphic, what is the most likely cause of the problem?

- A. incorrect bandwidth configuration
- B. incorrect LMI configuration
- C. incorrect map statement
- D. incorrect IP address

Answer: C

NO.2 At which layer of the OSI model is RSTP used to prevent loops?

- A. physical
- B. data link
- C. network
- D. transport

Answer: B

NO.3 In GLBP, which router will respond to client ARP requests?

- A. The active virtual gateway will reply with one of four possible virtual MAC addresses.
- B. All GLBP member routers will reply in round-robin fashion.
- C. The active virtual gateway will reply with its own hardware MAC address.
- D. The GLBP member routers will reply with one of four possible burned in hardware addresses.

Answer: A

NO.4 CORRECT TEXT

CCNA.com has a small network that is using EIGRP as its IGP. All routers should be running an EIGRP AS number of 12. Router MGT is also running static routing to the ISP.

CCNA.com has recently adding the ENG router. Currently, the ENG router does not have connectivity to the ISP router. All other interconnectivity and Internet access for the existing locations of the company are working properly.

The task is to identify the fault(s) and correct the router configuration(s) to provide full connectivity between the routers.

Access to the router CLI can be gained by clicking on the appropriate host.

All passwords on all routers are **cisco**.

IP addresses are listed in the chart below.

MGT

Fa0/0 - 192.168.77.33

S1/0 - 198.0.18.6

S0/0 - 192.168.27.9

S0/1 - 192.168.50.21

ENG

Fa0/0 - 192.168.77.34

Fa1/0 - 192.168.12.17

Fa0/1 - 192.168.12.1

Parts1

Fa0/0 - 192.168.12.33

Fa0/1 - 192.168.12.49

S0/0 - 192.168.27.10

Parts2

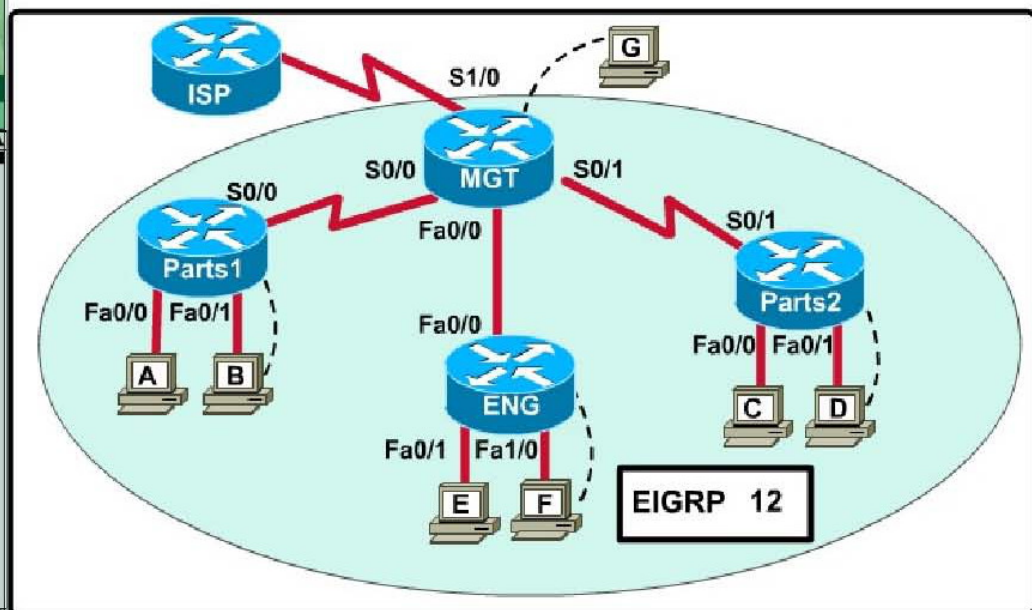
Fa0/0 - 192.168.12.65

Fa0/1 - 192.168.12.81

S0/1 - 192.168.50.22



- You may need to scroll this window and the problem statement window.
- Click on picture of host connected to the specified router and select the CiscoTerminal option to configure the router. If you select the wrong host, click on the show topology



Answer:

On the MGT Router:

Config t

Router eigrp 12

Network 192.168.77.0

NO.5 Which IPv6 address is the equivalent of the IPv4 interface loopback address 127.0.0.1?

- A. ::1
- B. ::
- C. 2000::/3
- D. 0::/10

Answer: A

NO.6 Refer to the exhibit.

```

Gateway of last resort is not set

  192.168.25.0/30 is subnetted, 4 subnets
  D   192.168.25.20 [90/2681856] via 192.168.15.5, 00:00:10, Serial0/1
  D   192.168.25.16 [90/1823638] via 192.168.15.5, 00:00:50, Serial0/1
  D   192.168.25.24 [90/3837233] via 192.168.15.5, 00:05:23, Serial0/1
  D   192.168.25.28 [90/8127323] via 192.168.15.5, 00:06:45, Serial0/1
  C   192.168.15.4/30 is directly connected, Serial0/1
  C   192.168.2.0/24 is directly connected, FastEthernet0/0
    
```

Which address and mask combination represents a summary of the routes learned by EIGRP?

- A. 192.168.25.0 255.255.255.240
- B. 192.168.25.0 255.255.255.252
- C. 192.168.25.16 255.255.255.240
- D. 192.168.25.16 255.255.255.252
- E. 192.168.25.28 255.255.255.240
- F. 192.168.25.28 255.255.255.252

Answer: C

NO.7 It has become necessary to configure an existing serial interface to accept a second Frame Relay virtual circuit. Which of the following procedures are required to accomplish this task? (Choose three.)

- A. Remove the IP address from the physical interface.
- B. Encapsulate the physical interface with multipoint PPP.
- C. Create the virtual interfaces with the interface command.
- D. Configure each subinterface with its own IP address.
- E. Disable split horizon to prevent routing loops between the subinterface networks.
- F. Configure static Frame Relay map entries for each subinterface network.

Answer: A,C,D

NO.8 A national retail chain needs to design an IP addressing scheme to support a nationwide network. The company needs a minimum of 300 sub-networks and a maximum of 50 host addresses per subnet. Working with only one Class B address, which of the following subnet masks will support an appropriate addressing scheme? (Choose two.)

- A. 255.255.255.0
- B. 255.255.255.128
- C. 255.255.252.0
- D. 255.255.255.224
- E. 255.255.255.192
- F. 255.255.248.0

Answer: B,E

NO.9 Which statement describes the process of dynamically assigning IP addresses by the DHCP server?

- A. Addresses are allocated after a negotiation between the server and the host to determine the length of the agreement.
- B. Addresses are permanently assigned so that the hosts uses the same address at all times.
- C. Addresses are assigned for a fixed period of time, at the end of the period, a new request for an address must be made.
- D. Addresses are leased to hosts, which periodically contact the DHCP server to renew the lease.

Answer: D

NO.10 Before installing a new, upgraded version of the IOS, what should be checked on the router, and which command should be used to gather this information? (Choose two.)

- A. the amount of available ROM
- B. the amount of available flash and RAM memory
- C. the version of the bootstrap software present on the router
- D. show version
- E. show processes
- F. show running-config

Answer: B,D

NO.11 Which statements describe the routing protocol OSPF? (Choose three.)

- A. It supports VLSM.
- B. It is used to route between autonomous systems.
- C. It confines network instability to one area of the network.
- D. It increases routing overhead on the network.
- E. It allows extensive control of routing updates.
- F. It is simpler to configure than RIP v2.

Answer: A,C,E

NO.12 A Cisco router is booting and has just completed the POST process. It is now ready to find and load an IOS image. What function does the router perform next?

- A. It checks the configuration register.
- B. It attempts to boot from a TFTP server.
- C. It loads the first image file in flash memory.
- D. It inspects the configuration file in NVRAM for boot instructions.

Answer: A

NO.13 What Cisco IOS feature can be enabled to pinpoint an application that is causing slow network performance?

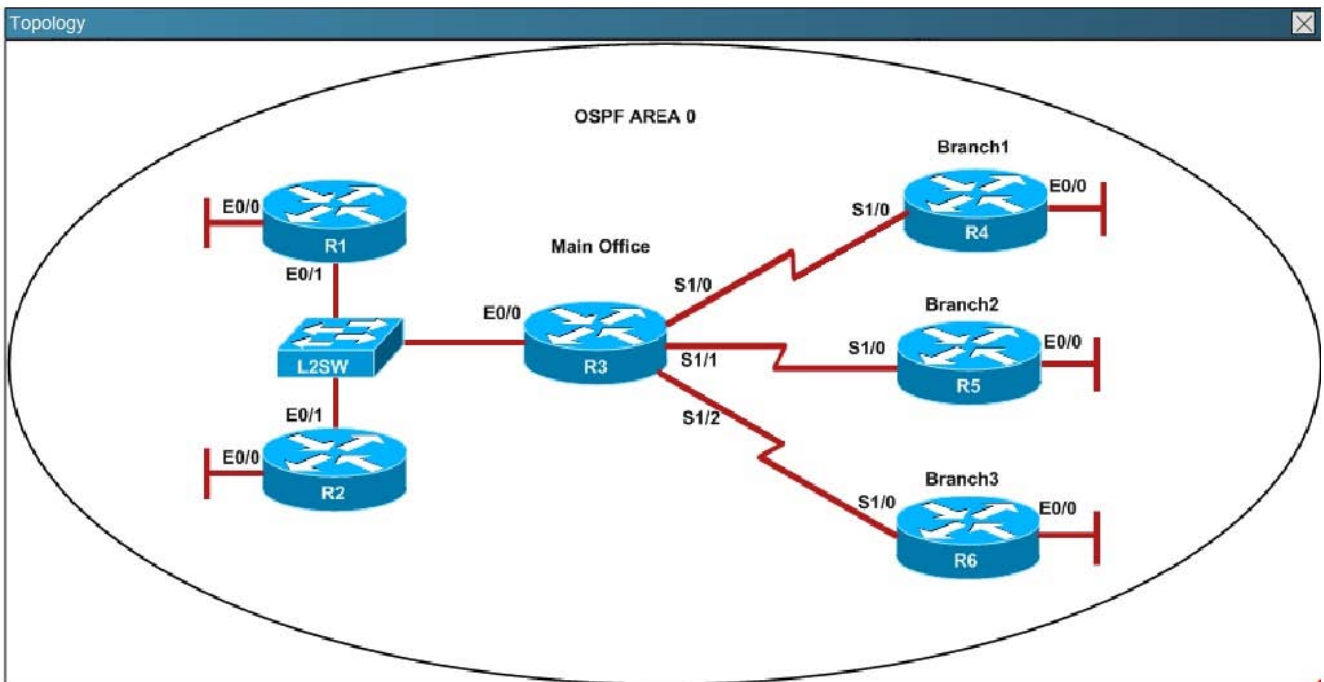
- A. SNMP
- B. Netflow
- C. WCCP
- D. IP SLA

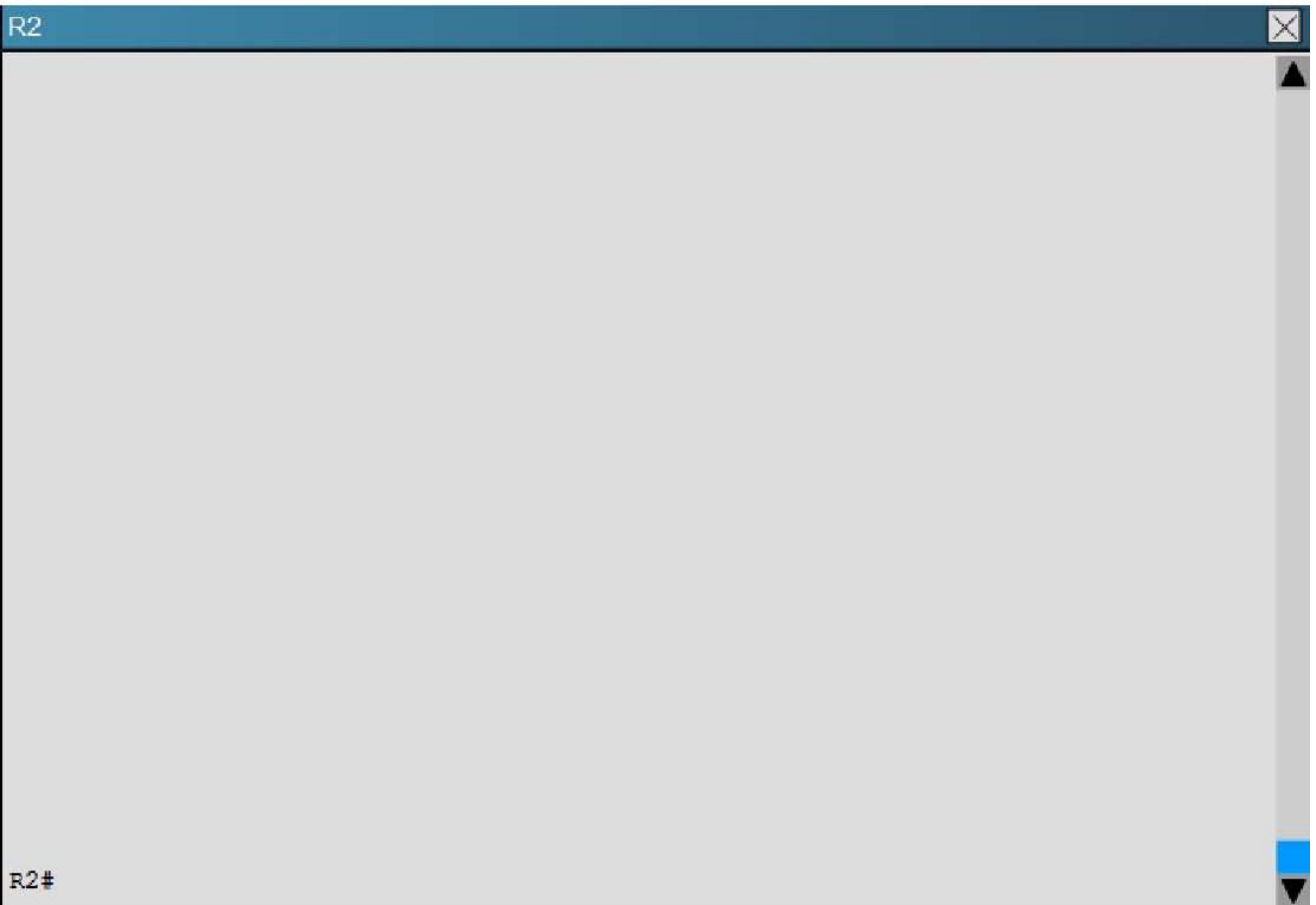
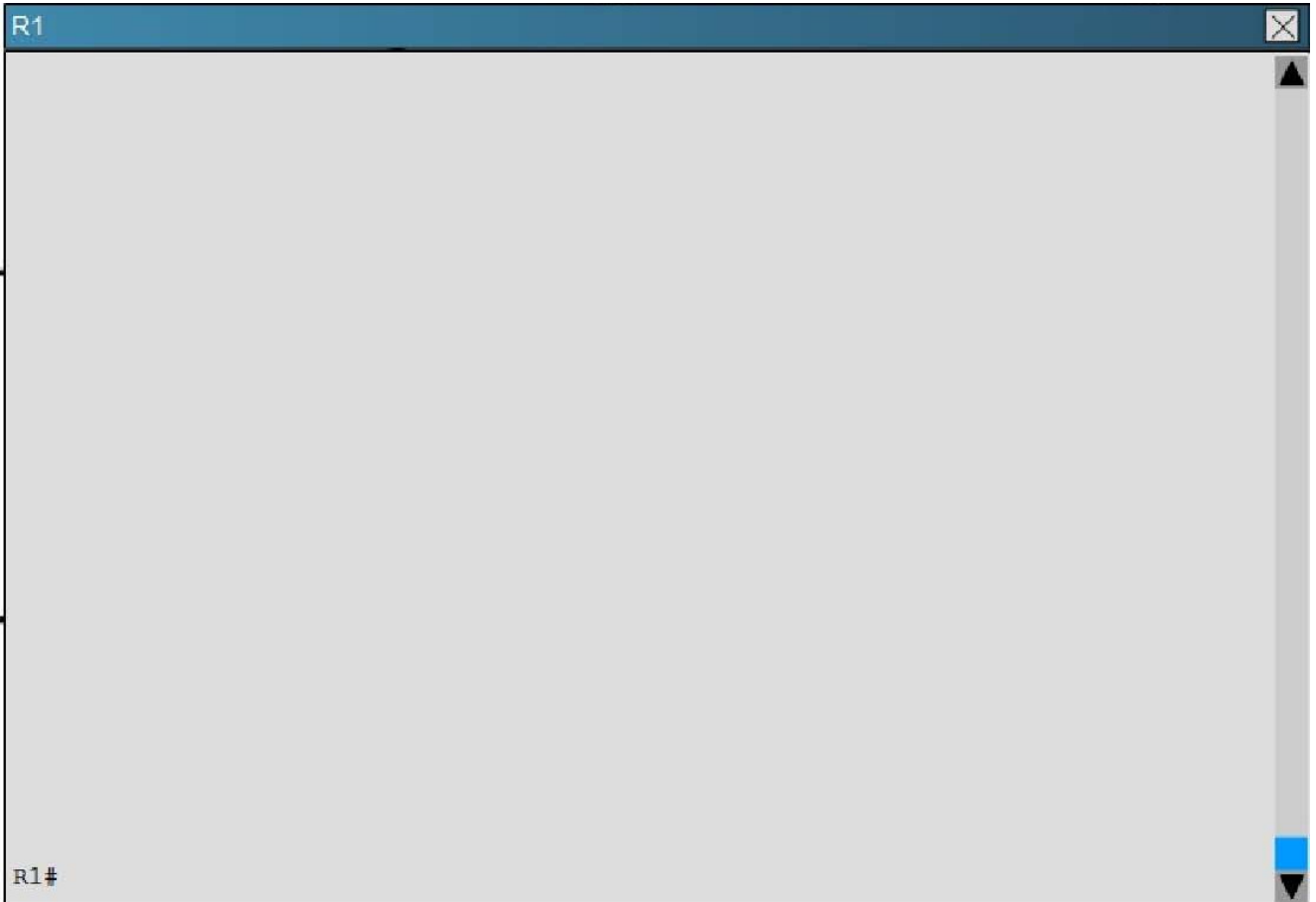
Answer: B

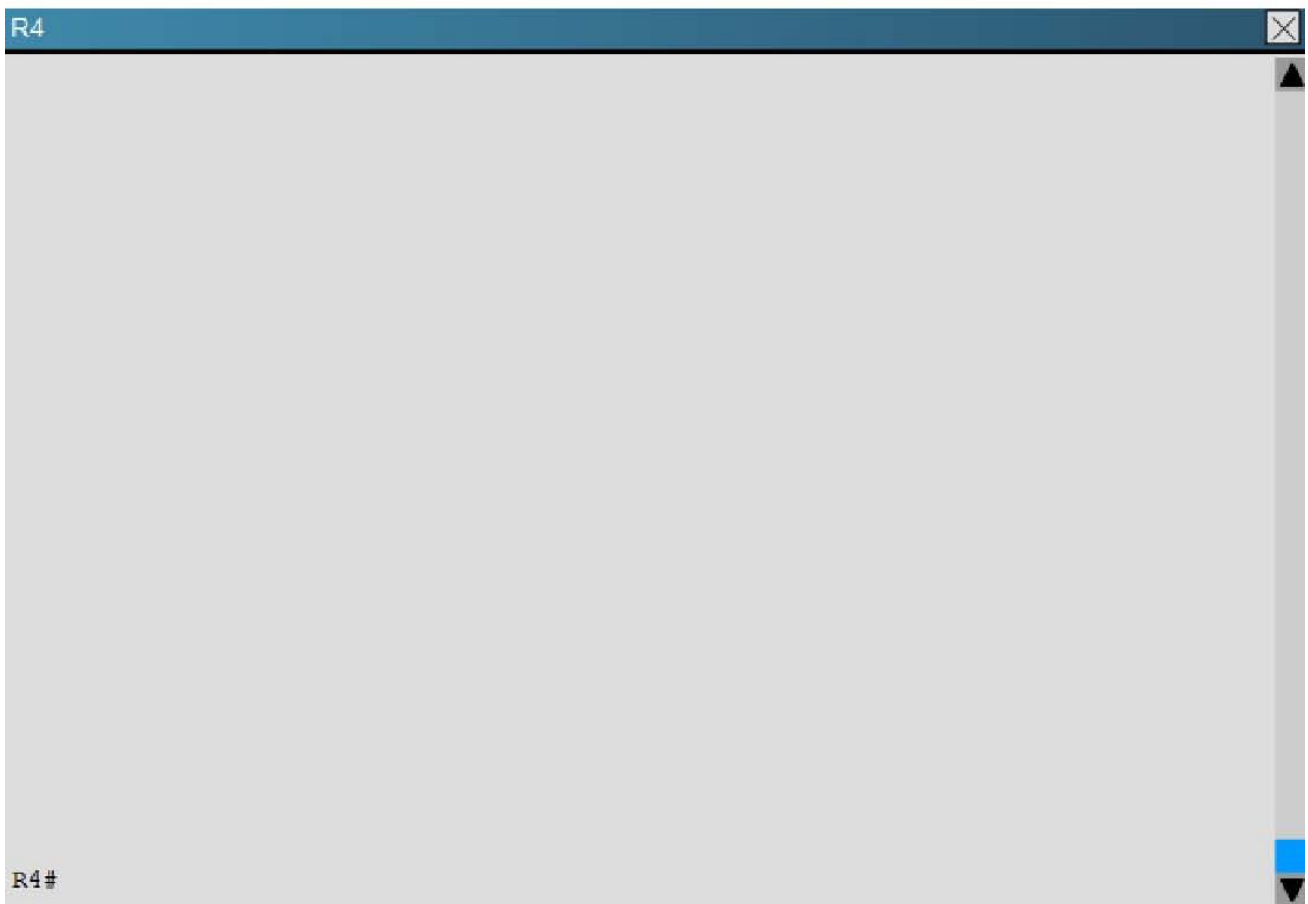
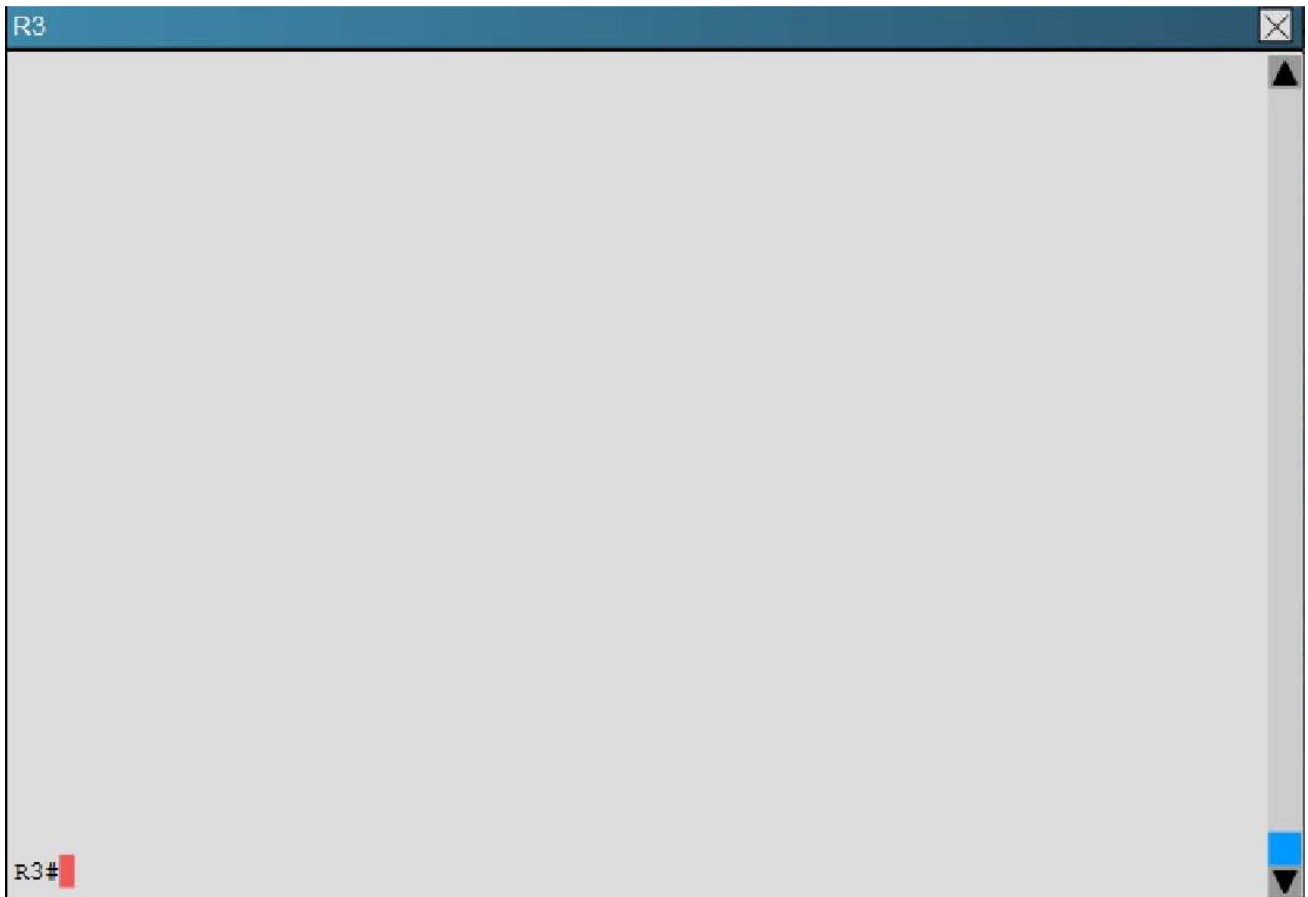
NO.14 Scenario

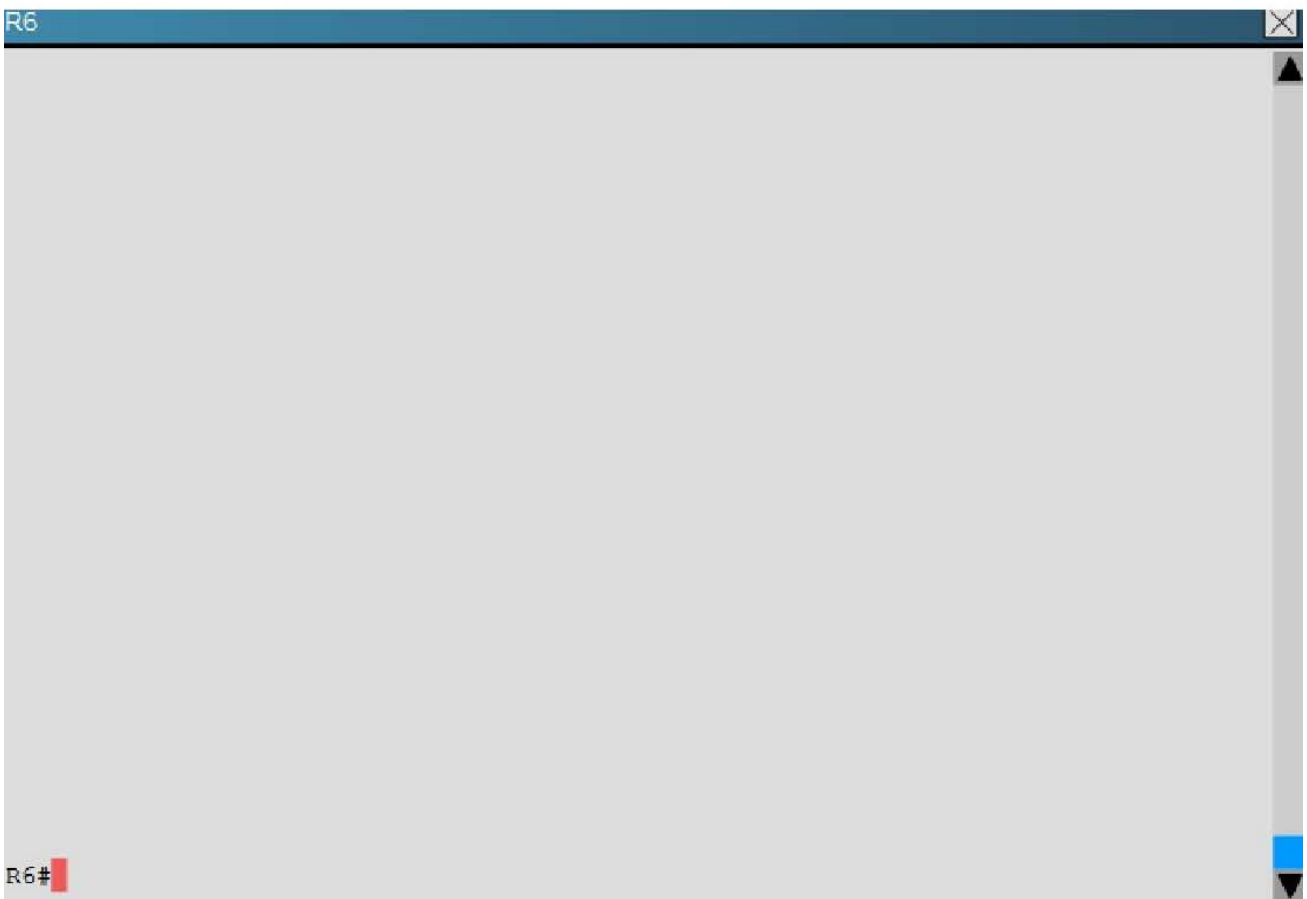
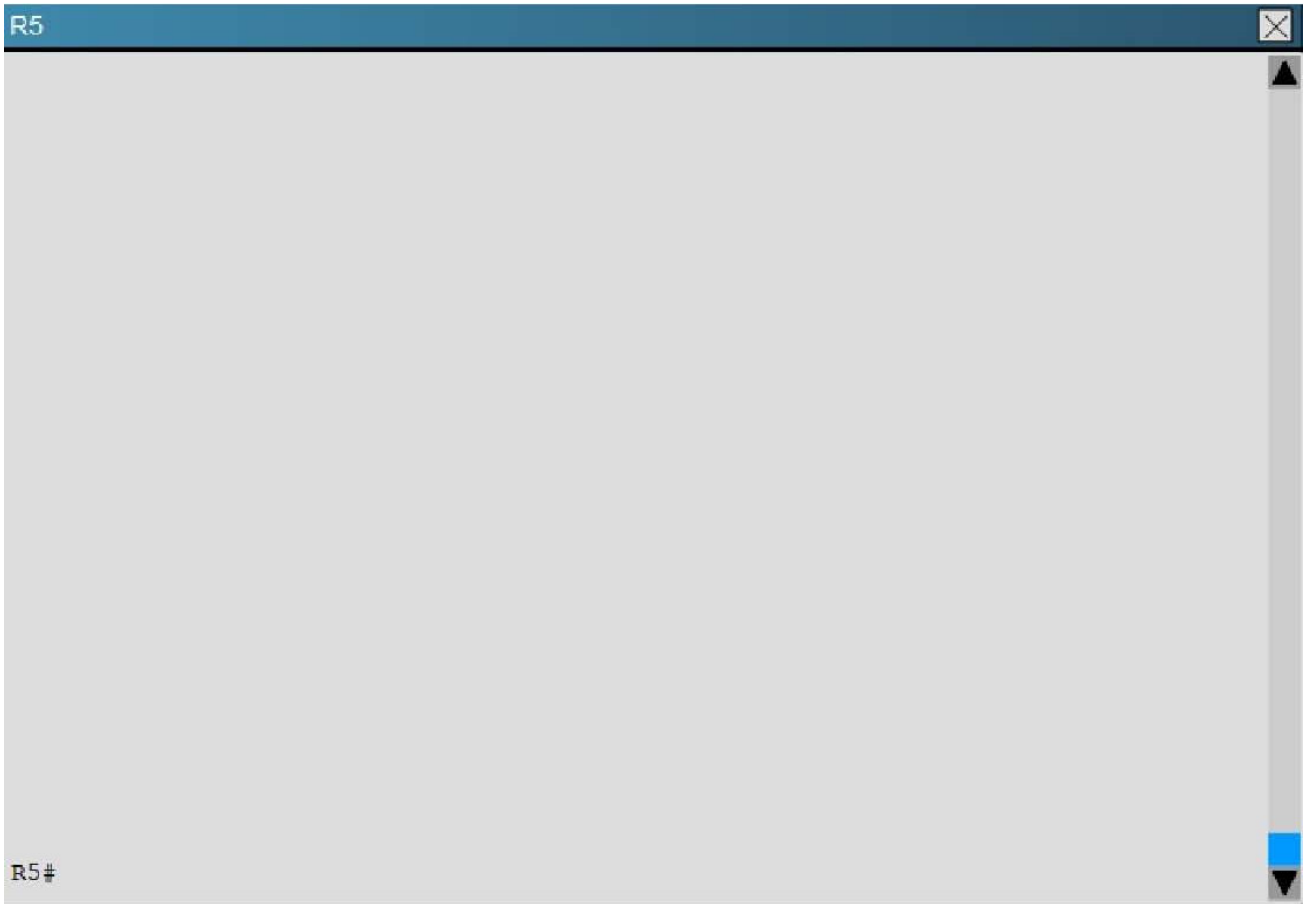
Refer to the topology. Your company has decided to connect the main office with three other remote branch offices using point-to-point serial links.

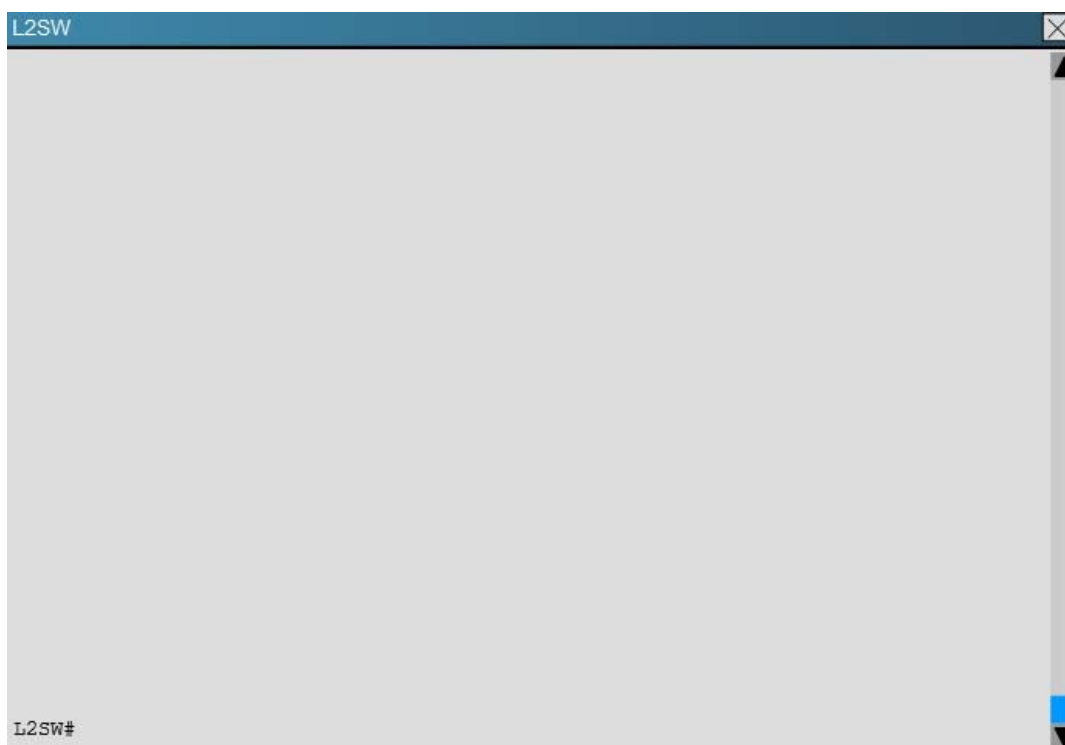
You are required to troubleshoot and resolve OSPF neighbor adjacency issues between the main office and the routers located in the remote branch offices.











An OSPF neighbor adjacency is not formed between R3 in the main office and R6 in the Branch3 office. What is causing the problem?

- A. There is an area ID mismatch.
- B. There is a PPP authentication issue; the username is not configured on R3 and R6.
- C. There is an OSPF hello and dead interval mismatch.
- D. The R3 router ID is configured on R6.

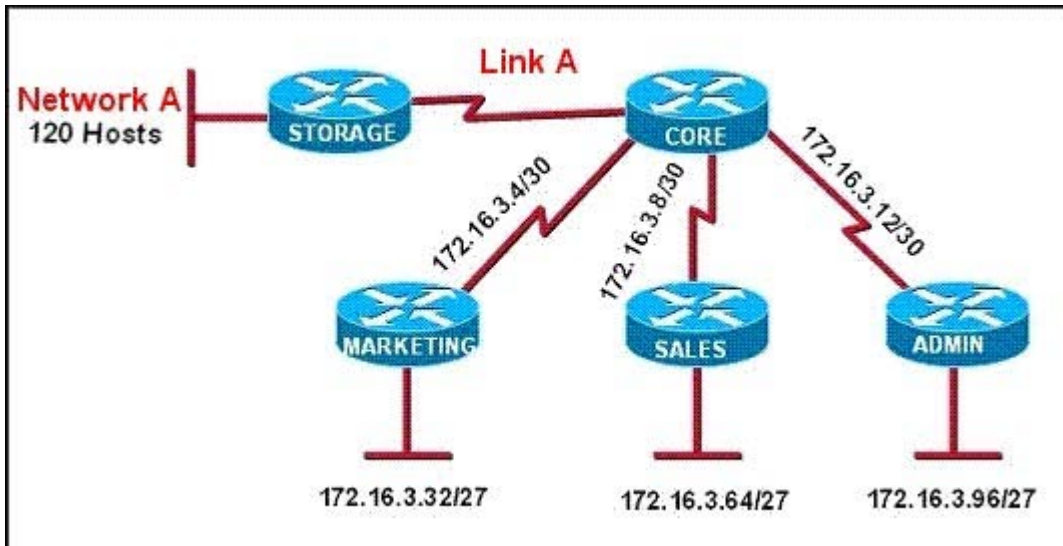
Answer: D

NO.15 Which three are characteristics of an IPv6 anycast address? (Choose three.)

- A. one-to-many communication model
- B. one-to-nearest communication model
- C. any-to-many communication model
- D. a unique IPv6 address for each device in the group
- E. the same address for multiple devices in the group
- F. delivery of packets to the group interface that is closest to the sending device

Answer: B,E,F

NO.16 Refer to the exhibit.



All of the routers in the network are configured with the ip subnet-zero command. Which network addresses should be used for Link A and Network A? (Choose two.)

- A. Network A - 172.16.3.48/26
- B. Network A - 172.16.3.128/25
- C. Network A - 172.16.3.192/26
- D. Link A - 172.16.3.0/30
- E. Link A - 172.16.3.40/30
- F. Link A - 172.16.3.112/30

Answer: B,D

NO.17 A receiving host computes the checksum on a frame and determines that the frame is damaged.

The frame is then discarded. At which OSI layer did this happen?

- A. session
- B. transport
- C. network
- D. data link
- E. physical

Answer: D

NO.18 Refer to the exhibit.

```
Switch# show spanning-tree interface fastethernet0/10
Vlan          Role Sts Cost      Prio.Mbr Type
-----
VLAN0001     Root FWD 19        128.1   P2p
VLAN0002     Altn BLK 19        128.2   P2p
VLAN0003     Root FWD 19        128.2   P2p
```

Given the output shown from this Cisco Catalyst 2950, what is the reason that interface FastEthernet 0/10 is not the root port for VLAN 2?

- A. This switch has more than one interface connected to the root network segment in VLAN 2.

- B. This switch is running RSTP while the elected designated switch is running 802.1d Spanning Tree.
- C. This switch interface has a higher path cost to the root bridge than another in the topology.
- D. This switch has a lower bridge ID for VLAN 2 than the elected designated switch.

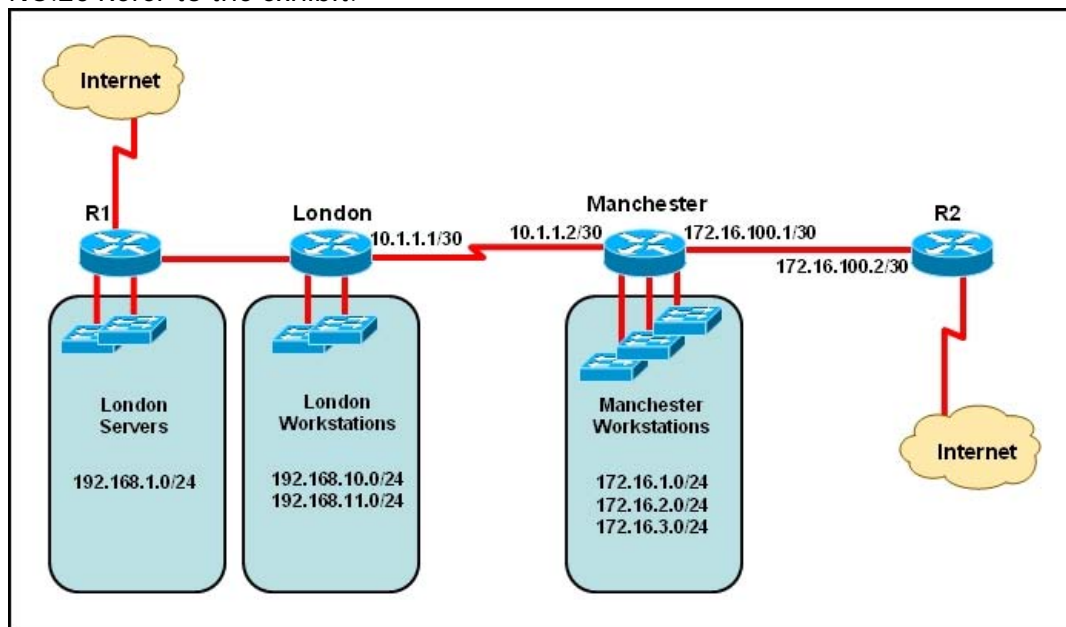
Answer: C

NO.19 What are the Popular destinations for syslog messages to be saved? (Choose three)

- A. Flash
- B. The logging buffer .RAM
- C. The console terminal
- D. Other terminals
- E. Syslog server

Answer: B,C,E

NO.20 Refer to the exhibit.



The network administrator must establish a route by which London workstations can forward traffic to the Manchester workstations. What is the simplest way to accomplish this?

- A. Configure a dynamic routing protocol on London to advertise all routes to Manchester.
- B. Configure a dynamic routing protocol on London to advertise summarized routes to Manchester.
- C. Configure a dynamic routing protocol on Manchester to advertise a default route to the London router.
- D. Configure a static default route on London with a next hop of 10.1.1.1.
- E. Configure a static route on London to direct all traffic destined for 172.16.0.0/22 to 10.1.1.2.
- F. Configure Manchester to advertise a static default route to London.

Answer: E